

Human Motion Control Laboratory

Research:

- Musculoskeletal Control of Spine Motion
- Low Back Pain
- Occupational Vibration Exposure
- Medical Device Design and Testing

Collaborating Faculty:

Ronald Dougherty, Ph.D., Elizabeth Friis, Ph.D. (KU)
Carl Weiner, M.D., Stephen Waller, M.D.,
Neena Sharma, PhD (KUMC)



Equipment:

Electromyography, electrooculography; Optotrak motion tracking, Trakstar electromagnetic motion tracking; Accelerometers; Electrogoniometers; Force plate; Shaker table; Specialty vibration devices

Funding Sources:

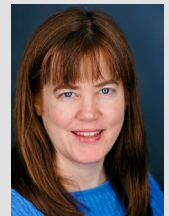
NIOSH, NIH, Industry



Director:

Sara Wilson, Ph.D.

Track Co-Director, Biomedical
Product Design & Dev



Associate Professor, Mechanical
Engineering

sewilson@ku.edu

Courses:

Biomechanical Systems
Physiological Systems Advanced
Control Systems

Go to bio.engr.ku.edu to learn more.