

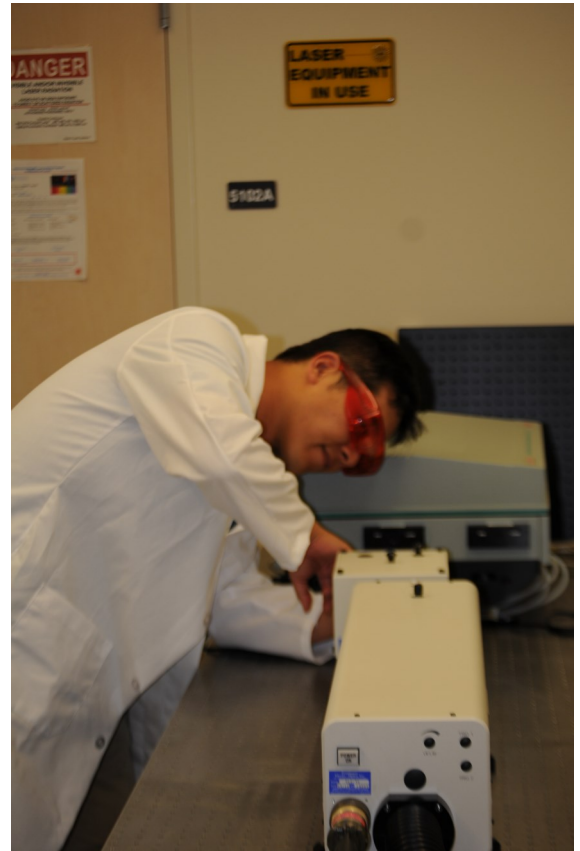
Biomedical Ultrasound/laser Laboratory

Research:

- Photoacoustic imaging
- High Intensity focused ultrasound
- Imaging-guided intervention
- Cavitation
- Wave propagation

Collaborating Faculty:

Paul Cheney, Ph.D. (KUMC)
Hongyu Zhang, Ph.D. (KUMC)
Mark Cohen, MD (U. Michigan)
M. Laird Forrest, Ph.D. (KU)
Shenqiang Ren, Ph.D. (KU)

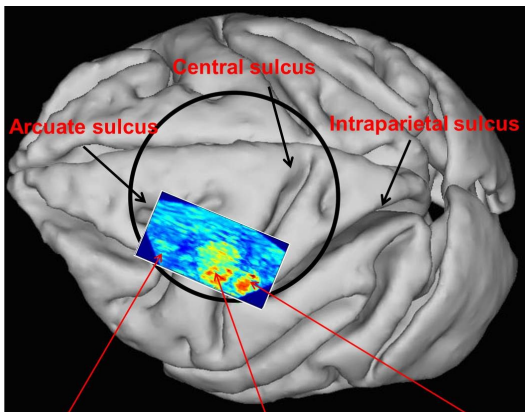


Equipment:

10 and 30 Hz high-power pulsed laser system; high Intensity focused ultrasound system; imaging systems for photoacoustic tomography and microscopy.

Funding Sources:

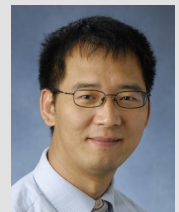
National Institutes of Health



Frontal eye field cortex Motor cortex Somatosensory cortex

Director:

Xinmai Yang, Ph.D.
(Boston University, 2003)
Assistant Professor,
Mechanical Engineering



xmyang@ku.edu

Courses:

Acoustics
Biomedical Optics
Mechanical Engineering Measurement
and Experimentation

Go to www.bio.engr.ku.edu to learn more.