

Biosensing

Tools for Precision Medicine

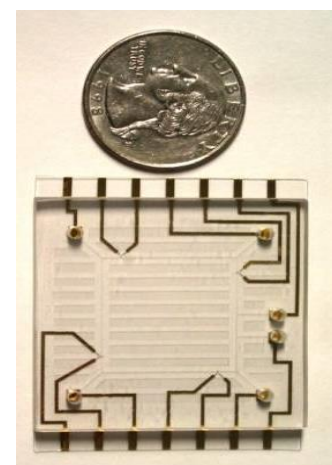
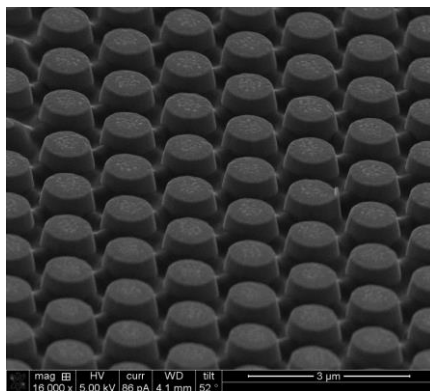
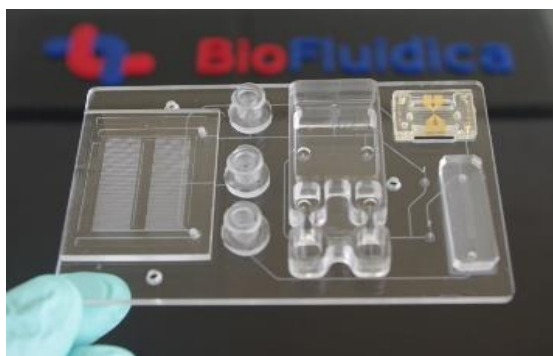
Clinical Apps



Fabrication

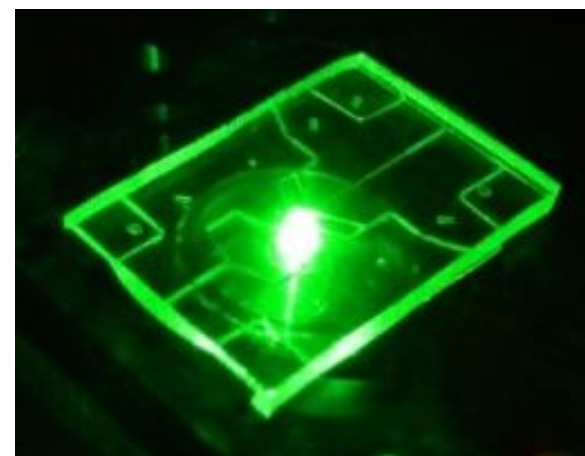
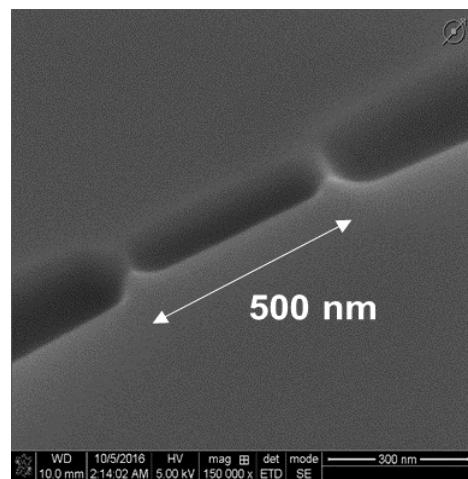
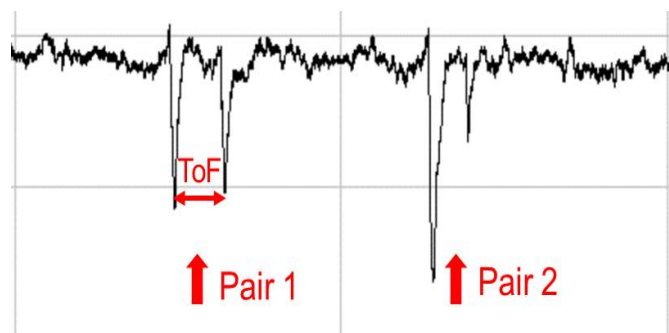
Assays

Fabrication



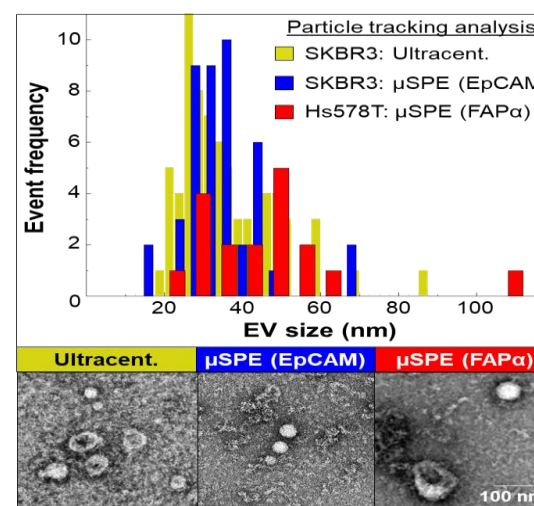
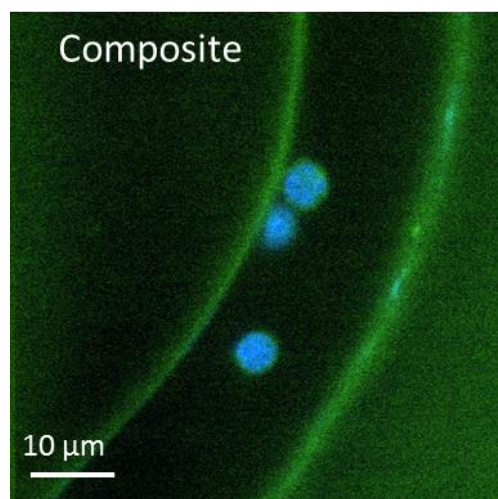
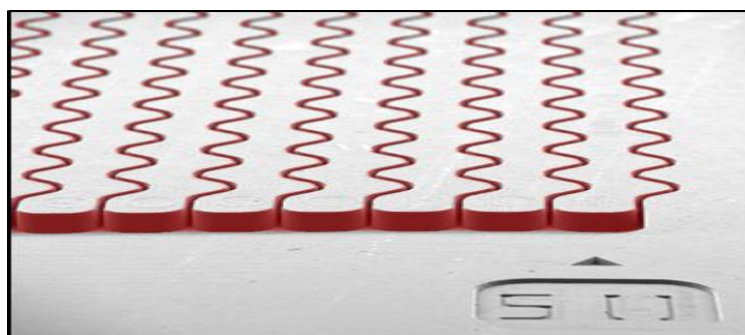
Microfluidics
Nanofluidics
Lab on a Chip
Injection Molding

Biosensing



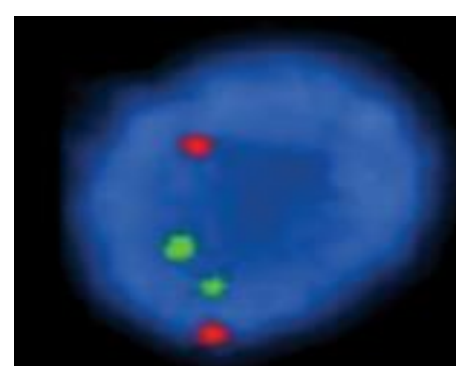
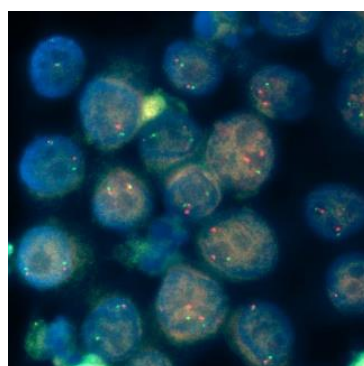
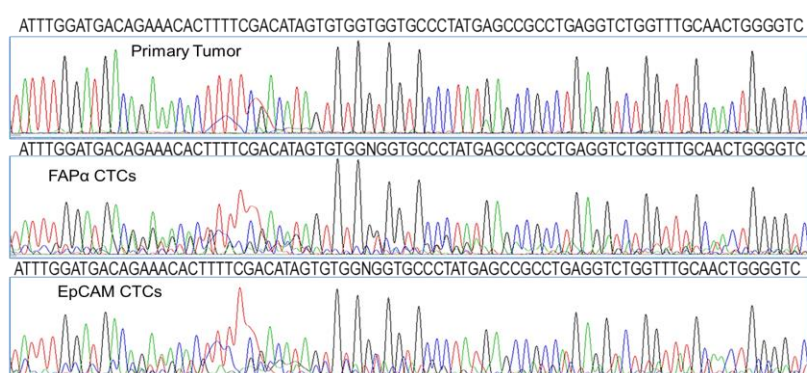
Single Molecules
Fluorescence
Conductance
Resistive Pulse

Assays



Circulating
Tumor Cells
Exosomes
Cell Free DNA
Proteins

Clinical Apps



Cancer
Stroke
Infectious Disease
DNA Sequencing
Mutation Detection

Steven A. Soper

- PhD Bioanalytical Chemistry, KU
- PDF, Los Alamos National Lab
- Number PhDs/MS - 55

- Number of Pubs - 330 (h-index 63)
- LSU, UNC, KU - Faculty Positions
- Foundation Distinguished Professor

Contacts

ssoper@ku.edu
cbmm.faculty.ku.edu